



Sympodium® ID250

Interactive Pen Display



Do more with your material

The Sympodium ID250 interactive pen display makes your presentations come alive. By connecting the ID250 to a computer and projector, you can display your desktop on a screen for groups of any size. You'll have immediate access to your digital material in any networked room.

Touching the pen tool to the ID250's LCD screen lets you launch and control applications, open files and write with digital ink over material, including, PowerPoint® slides, websites and moving video. Everything you do appears simultaneously on the projection screen. You can save, print, post or e-mail your work so that everyone has the updated material.

A versatile tool that works for everyone

The ID250 interactive pen display sets the highest standard for flexible presentation tools. Designed for a range of meeting environments, the ID250 can be placed on a table or podium, or installed permanently.

Whether delivering training or pitching a concept, anyone can work easily with their computer materials. The tethered pen does not require batteries, and the accessible pen-tool buttons on the front of the unit eliminate the need for floating toolbars on your presentation screen.

With the versatility provided by its numerous features, the ID250 enables you to engage your audience and make your message more memorable.

"Prior to owning our Sympodium interactive pen display, we had to hold our quarterly meetings off-site or rent equipment for presentations and audio. Now, our Sympodium product allows us to provide top quality presentations to our staff and clients, and will pay for itself in no time."

*Jay M. Copenhaver, Chief Information Officer/Assistant Vice-President,
GAI Consultants, Inc., Homestead, Pennsylvania, U.S.*

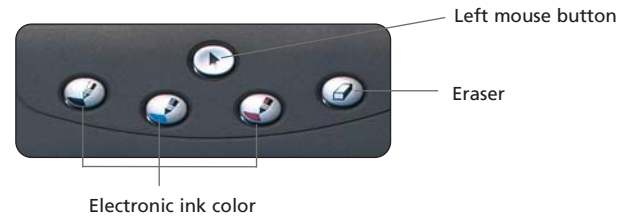


Control computer applications and write notes on the LCD screen while your audience sees the same image projected on a larger screen.

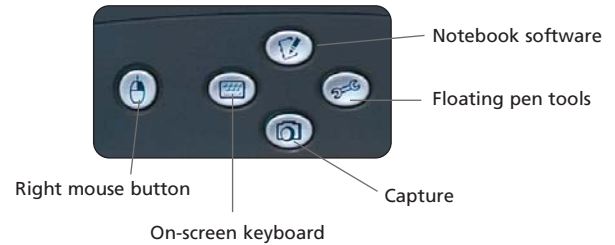
Features



Pen-Tool Buttons



Function Buttons



Interactive screen – Use the pen tool to control your computer and write notes over any application. The screen registers only the pen tool contact, so a touch by your palm or sleeve will not affect the image.

Save function – Capture your work in Notebook™ software or save notes directly into several software applications, including Windows® versions of Microsoft® PowerPoint, Word and Excel, or into AutoCAD® software.

Battery-free tethered pen – Write smoothly and comfortably with the securely attached pen. And no battery means no maintenance cost or downtime.

Pen-tool buttons – Change ink color or use the eraser without crowding your display with toolbars.

Function buttons – Quickly access the right mouse button, on-screen keyboard, screen capture tool, floating tools and Notebook software.

On-screen display buttons – Fine-tune display properties to suit your preferences.

Adjustable tilt stand – Move the console to a comfortable viewing angle.

VESA mounting plate – Integrate the ID250 with a variety of installations. Any VESA-75 LCD mounting arm can be used.

RGB video pass-through – Connect the ID250 to a digital projector so both devices display the same image.

USB connection – Connect the ID250 to a USB port.

Warranty – Two-year limited warranty

Dimensions

Screen Area	15" (38.1 cm) diagonal
Size	15 3/4" W x 2" H x 13 3/8" D (40.0 cm x 5.1 cm x 34.0 cm)
Weight	9 lb. (4.1 kg)

System Requirements for Windows Operating Systems

Pentium® 150 MHz processor (450 MHz or faster recommended) • 128 MB of RAM (256 MB recommended)
 • Available powered USB port • Approximately 160 MB of free hard disk space for a full installation • Windows NT® 4.0 (SP6), Windows 98 operating system or later • Microsoft Internet Explorer 5.0 or later • Macromedia® Flash® player version 7.0.19 or later (recommended)

System Requirements for Macintosh Computers

400 MHz processor (800 MHz or faster recommended) • 128 MB of RAM (256 MB recommended) • Available powered USB port • 50 MB of free hard disk space for minimum installation, 115 MB for full installation with Gallery collections • Mac OS® X version 10.1.5 or later (Java version 1.3.1 Update 1)

Other versions of SMART Board software are available for UNIX® and Linux® systems, as well as for earlier Windows and Macintosh operating systems.

SMART Board software

Notebook software

Save images, screen captures and notes into a single, presentation-ready file. Convert handwriting to text and save notes and images directly into many software applications.

SMART Board tools

Type with the On-Screen Keyboard, write over digital video, record a presentation, and much more.

LinQ™ software

Control your laptop or Tablet PC from the ID250. LinQ software uses your wired or wireless network to create a quick connection between devices.

Visit www.smarttech.com/ID250



SMART Technologies Inc.
 1207 – 11 Avenue SW, Suite 300
 Calgary, AB T3C 0M5
 CANADA
 Phone +1.403.245.0333
 Toll Free 1.888.42.SMART (Canada/U.S.)
 Fax +1.403.228.2500
 info@smarttech.com www.smarttech.com

Authorized SMART reseller